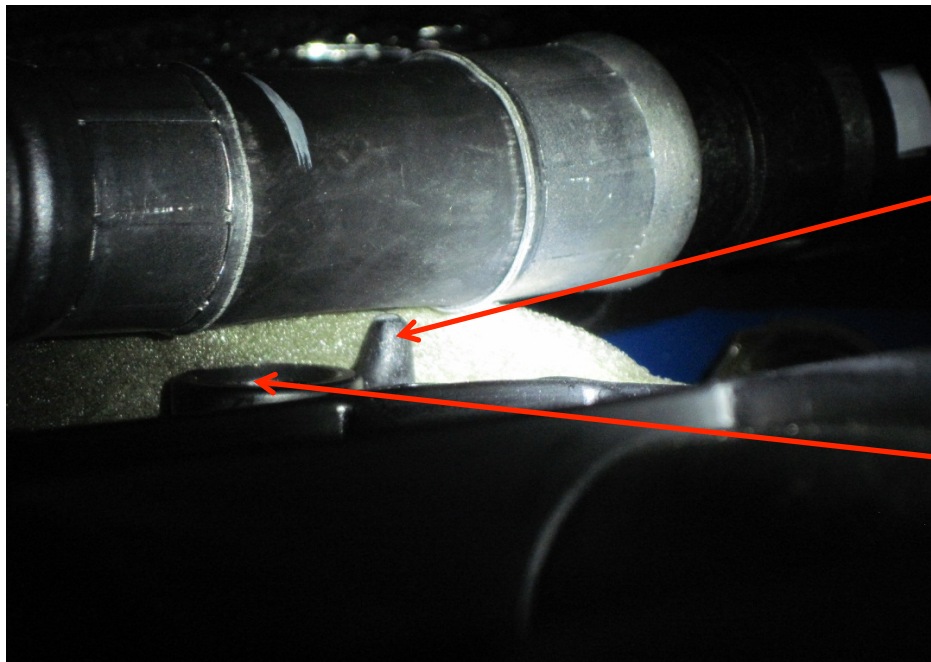


**P415 3.7L TiVCT Upper Intake Manifold
TMAP Sensor Anti-Rotation Tab
In-Vehicle Rework Procedure
For DTP and KCAP
3/28/14**

- 1 - Ensure vehicle is in Park, engine is off and keys are NOT in the ignition.
- 2 - Set Parking Brake.
- 3 - Open hood and locate TMAP Sensor Boss at passenger side firewall area of engine compartment (under heater core coolant lines).



Anti-Rotation Tab

TMAP Sensor Boss

4 - Use tool provided (DeWalt Multi-Saw #DWHT20542) to perform the rework of the anti-rotation tab portion of the TMAP Sensor Boss



White blade substituted for picture clarity. Blade is to be mounted with teeth pointed rearward toward handle. The saw will cut on the back/draw stroke. The retaining screw is oriented upwards.

- 5 - Position saw at base of anti-rotation tab and ensure that the saw is oriented at a slight downward angle away from the TMAP Boss. (The blade will rest on the top of the TMAP Boss and be angled slightly downwards at the teeth).
- 6 - Before cutting the tab, ensure that the saw blade is clear of surrounding components to avoid contact or damage.



7 – Proceed to cut the anti-rotation tab.



- 8 - Once the tab is cut with the saw, ensure the cut tab is **BELOW** flush from the TMAP Sensor Boss.
- 9 - Next, take a medium file and apply duct tape along the length of one side. The taped side of the file will help protect surrounding components. With the taped side oriented up, begin to file smooth the cut anti-rotation tab to ensure no sharp edges or burrs remain on the cut tab.



- 10 - After filing is complete, inspect adjacent area to the rework to ensure no damage to any surrounding components.
- 11 - Ensure all rework tools are removed from engine compartment. Close hood, release parking brake.